

## Welcome Mississauga Figure Skating Club Members!

Fall/Winter registration for the 2011/12 season is available on-line for **ALL** types of registrations: PreCanskate, Canskate, and all StarSkate programs including Junior, Intermediate, and Senior as well as Adult StarSkate or Adult Canskate programs.

For **StarSkate registrations** you can choose your sessions in each level of your skater. For example, any combined sessions will show in each registration type.

### Before beginning the online process please read these instructions carefully.

Before you begin Registering on line:

If you are a returning MFSC member, or you are or have been a member of another Skate Canada affiliated figure skating club (Parks & Rec. programs not applicable) you will need to know your Skate Canada number. If you do not know your (or your child's) Skate Canada membership number, please send an email requesting this information to [info@mississaugafsc.com](mailto:info@mississaugafsc.com). Please include the members' full name, date of birth and name of previous home club if other than MFSC. New members (who have not previously been registered with a Skate Canada affiliated figure skating club) do not require this information to register. A Skate Canada membership number will be assigned after you are registered with MFSC.

Instructions:

**See Detailed Example and Instructions Screen by screen at the end of this document:**

Explanation of the Types of Programs:

Canskate: PreCanskate Ages 3 to 5 yrs Canskate Age 5 and up

StarSkate: Junior A & B, Intermediate, Senior (see qualifications on website)

Adult: Adult Canskate, Adult StarSkate

#### Registration selection:

1a) Review Schedule, note any changes to sessions, and confirm lessons with coach

1b) Complete Bingo Date Request form- \*\*\*contact Shelly Ellis\*\*\* (905-896-9832) this step must be done prior to completing registration.

1c) Complete paper copy of Volunteer Commitment Form and mail or drop off at the club.

**1d) Register by choosing the desired sessions, then,**

**1e) For Canskaters and PreCanskaters – Fees for either one Fundraising box of Chocolates (\$60) or Profits on Chocolates (\$30) (based on your selection) will be added automatically for each skater registered**

**1f) For Starskaters and Adult Starskaters - Fees for either one Fundraising box of Chocolates (\$60) or Profits on Chocolates (\$30) (based on your selection) plus one Skate Canada Fee (\$33) and one Admin. fee (\$30) will be added automatically for each skater registered**

1g) If you have any credit notes or Program Assistant Credits email [Info@Mississaugafsc.com](mailto:Info@Mississaugafsc.com) to have them applied to your invoice/registration

The initial payment required is \$410.00 or more, if desired on your credit card. The system can only track the total amount owing per each type of registration (CanSkate, StarSkate and Adult) so if you are registering your family for more than one type you will have an invoice/registration per type. You should pay \$410 on only one invoice/registration initially. - see Example below:

The additional payments can be made by **post-dated cheque(s)** payable to Mississauga Figure Skating Club as below:

i) **Installment Options:**

Program fees totaling . . .

- i) One day/wkPreCan/Canskate/Starskate – \$410 fees at registration
- ii) Multiple day CanSkate or StarSkate<\$1,600 – \$410 of fees at registration and one-third of rest on each of Oct 21, 2011, Dec 9, 2011, and Jan 27, 2012.
- iii) Multiple day StarSkate>\$1,600 – \$410 of fees at registration you can ask for further installments from the Board of Directors ( or you can follow the above dates)

*It is the Members' responsibility to ensure that installment payments are received by MFSC by the due date(s). Late payments and/or NSF cheques will each be subject to a \$25 fee.*

*You can mail **Post-Dated Cheques** to the MFSC post office box at the time of registration or leave them in the green **MFSC mail box at Tomken arena- inside rink 1** on your **first skating session**.*

Skater Acceptance

Skaters are not considered accepted until the initial \$410 has been paid and confirmed.

Refunds

Refunds for all sessions will only be considered by written request to the Board. The deadline for refund requests for all levels and sessions is November 19, 2011. After November 19, only refunds for medical reasons will be considered. Requests must be presented to the board in writing, together with a Doctor Certificate. All refunds of session fees will be pro-rated. The Skate Canada fee, Administration fee and Mandatory Fundraising Chocolate fee are all non-refundable.

Fitness Tax Credits

We will issue Fitness tax credits in Feb 2012 for all payments received during the year for all permitted fees

This site is used by members of the Mississauga Figure Skating Club for Online Registration only. For all other information, please visit the club main website at [www.mississaugafsc.com](http://www.mississaugafsc.com).

# Example Instructions for Canskate/StarSkate Registration: -Revised Aug 12, 2011

***Use this if you are signing up for any Canskate level classes – PreCanskate, Canskate:***

1. Home Page—when you first sign on to the ON LINE Registration you are at the home page READ the summary Instructions on the left
2. The first area you should go to is the Profile to set up your family OR confirm information/make any changes from last year

Home  
Profile  
Registration

3. First is the main adult of the family:

Home  
Profile  
Registration  
Help  
SIGN OUT

Joe !Scott\_10940

### Personal Information

Name: Joe !Scott\_10940  
Birthday: 1960-01-01  
Email: Test10940\_hmorrison@aluma.com  
Address: 10940 Sport Road  
home phone: 5555555555  
work phone: 0 ext 0  
fax: 0  
cell: 0  
gender: M

[Edit Personal Contact Information](#)

4. Next add Family members whom you want to register

Home  
Profile  
Registration

Joe !Scott\_10940

### Add "IScott\_10940" Family Members

\* - marks a required field.

*Please enter all family members below that are involved in the registration (parents, and any children that need to be registered).*

NOTE: All fields are required for all users.

5. Add all Family Members... once done click

Add Members



6. Create a new registration—Click— then [Create new Registration](#)

Home  
Profile  
Registration

[2011/2012Registration Form](#)

Dick !Smith\_10940

Home  
Profile  
Registration

[2011/2012F Profile](#)

Dick !Smith\_10940

Dick !Smit

7. Accept the photo waiver

Home  
Profile  
Registration

[2011/2012Registration Form](#)

Help  
SIGN OUT

Dick !Smith\_10940

**Mississauga Figure Skating Club Registration**  
Waiver for The Mississauga Figure Skating Club Inc. and all of its directors, organizers and members:

I hereby declare that the information on this registration application is correct. If this application is accepted for membership, I agree to abide by the rules and regulations of the Mississauga Figure Skating Club Inc. ('the Club'), including my Bingo, Volunteer, and Fundraising commitments, and absolve the Club of any responsibility for personal losses, bodily injury or accidents. All fees, schedules, and membership commitments are subject to change at the Board's discretion. Decisions of the Board of Directors are final. The skater/parent acknowledges by his/her acceptance below that the skater is a resident of Mississauga. The skater/parent acknowledges that residence in Mississauga is a condition of membership in the Club. Misrepresentation of residency information may result in expulsion from the Club.

I, do hereby consent to the use of the Skater's name, biography and likeness on or in connection with any television or radio program, video / DVD, web, print media or the advertising and publicizing of such program as may be designated by Mississauga FSC and/or Skate Canada and waive all rights to remuneration or otherwise in connection with the above.

CLICK HERE TO BEGIN: [I Accept](#)

8. Enter Adult information first.... If already on there just review it

Home  
Profile  
Registration

[2009/2010 Registration Form](#)

Help  
SIGN OUT

(1)~ [Setup Family](#) (2) X [Adult Info](#) (3) X [Skater Info](#) (4) X [Skater Registration](#) (5) [Submit](#)

**Mississauga Figure Skating Club**

Invoice #: [891966](#)  
details

Fee

**Adult Info**  
This form is to gather parent information. Please choose an adult (parent) below.

Choose Family Member

[Choose Family Member](#)

9. Review and update your info. —Especially email account and phone numbers ( Either add another parent or click **“Done”**

Home  
Profile  
Registration  
2009/2010  
Registration Form

Help  
SIGN OUT

Joe !Scott\_10940

(1) Setup Family (2) Adult Info (3) Skater Info (4) Skater Registration (5) Submit

### Mississauga Figure Skating Club

Invoice #: 891966  
details

Fee

### Adult Info

This form is to gather parent information. Please choose an adult (parent) below.

Choose Family Member Joe !Scott\_10940

First Name: Joe  
Last Name: !Scott\_10940  
\* Gender: M  
\* Address: 10940 Sport Road  
\* City: Calgary  
\* Province: AB  
\* Postal Code: T1T 1T1  
\* Email: Test10940\_hmorrison@aluma.com  
\* Home Phone: (555) 555 - 5555  
Work Phone: ( ) -  
Work Ext.: 0  
Fax: ( ) -  
Cell Phone: ( ) -  
Where did you hear about MFSC?:

\*required fields - must be filled out to submit the form

DONE ADD ANOTHER PARENT

DONE-Click this button to continue.

10. Then you are at the stage to enter the skater's info... addresses etc. default in.

Home  
Profile  
Registration  
2009/2010  
Registration Form

Help  
SIGN OUT

(1) Setup Family (2) Adult Info (3) Skater Info (4) Skater Registration (5) Submit

### Mississauga Figure Skating Club

Invoice #: 891966  
details  
Joe !Scott\_10940  
Anne !Scott\_10940

Fee  
\$0.00  
\$0.00  
[remove](#)  
[remove](#)

### Skater Info

This step is to collect the player information. Please choose a child below. Once you finish providing info Info' step to provide information for your next child.

Choose Family Member Choose Family Member

Home  
Profile  
Registration  
2009/2010  
Registration Form

Help  
SIGN OUT

### Joe !Scott\_10940

(1) Setup Family (2) Adult Info (3) X Skater Info (4) Skater Registration (5) Submit

#### Mississauga Figure Skating Club

Invoice #: <u>891966</u>		
details	Fee	
Joe !Scott_10940	\$0.00	<a href="#">remove</a>
Anne !Scott_10940	\$0.00	<a href="#">remove</a>

#### Skater Info

This step is to collect the player information. Please choose a child below. Once you finish providing 'Info' step to provide information for your next child.

Choose Family Member

First Name:	Girl2000
Last Name:	!Scott_10940
* Birthday:	2000 03 03
* Gender:	F
* Address:	10940 Sport Road
* City:	Calgary
* Province:	AB
* Postal Code:	T1T 1T1
* Email:	Test10940_hmorrison@aluma.com
* Home Phone:	(555) 555 - 5555
Cell Phone:	( ) -
Health Care #:	

\* required fields - must be filled out to submit the form

DONE-Click this button to submit player information.

11. Chose Pull down Canskate  
for PreCanskate,orCanskate

Home  
Profile  
Registration  
2009/2010  
Registration Form

Help  
SIGN OUT

(1) Setup Family (2) Adult Info (3) Skater Info (4) Skater Registration (5) SUBMIT

### Mississauga Figure Skating Club

Invoice #: 891966  
 details  
 Girl2000 !Scott\_10940 \$0.00 [remove](#)  
 Joe !Scott\_10940 \$0.00 [remove](#)  
 Anne !Scott\_10940 \$0.00 [remove](#)

---

### Skater Registration

Choose the skater (child) below, and then you will be asked to choose a fee type.

Choose Family Member

\* Program:   
 \* Class Name:

Level:   
 Are your bingo sessions booked?:

REGISTER ANOTHER PLAYER-Click here to register another player.

### Skater Registration

Choose the skater (child) below, and then you will be asked to choose a Program/session.

Choose Family Member

\* Program:

- Canskate - Tuesdays 6:00PM (Sep 20, 2011 to Mar 13, 2012)
- Canskate - Thursdays 6:05PM (Sep 22, 2011 to Mar 15, 2012)
- Canskate - Saturdays 10:25AM (Sep 17, 2011 to Mar 17, 2012)
- PreCanskate - Tuesdays 6:10PM (Sep 20, 2011 to Mar 13, 2012)
- PreCanskate - Thursdays 6:15PM (Sep 22, 2011 to Mar 15, 2012)
- PreCanskate - Saturdays 10:35AM (Sep 17, 2011 to Mar 17, 2012)

12. Depending on the age of your child, you will see the Canskate, or Pre Canskate classes—Pre Canskate is 3-5 year olds The above child is 5 years old so you see both CanSkate and PreCanSkate options

\*Program: Canskate

**Canskate - Tuesdays 6:00PM (Sep 20, 2011 to Mar 13, 2012)**

Description (51825):  
CANSKATE (Ages 5 years & up) is Canada's only national learn-to-skate program, designed for beginners of all ages. This is a program that focuses on fun, participation and basic skill development. Participants earn badges and other incentives as they learn fundamental skating skills. Lessons are given in a group format and led by an NCCP certified professional coach. Professional coaches are assisted by trained Program Assistants. The coach/program assistant to student ratio is a maximum of 1:10. Skaters progress at their own rate and coaches conduct sessions using teaching aids, music and a wide variety of activities that create a fun environment and promote learning. Sessions are 50 minutes in length, and include a large group warm-up and cool-down component. CanSkate is the feeder program to all other Skate Canada Skating Programs. CanSkate It was developed by experts to teach the fundamentals of skating in a progressive and sequential manner. The CanSkate program focuses on the development of six fundamental movements organized in six stages of learning, with an optional 7th level for skaters who want to move into figure skating. The skills are arranged in progressions, from very simple to the more complex. Each stage has a primary focus. Once the skills on each stage are mastered, a badge is awarded. The series of badges include Stage badges, Fundamental Movement badges and Fitness badges

Schedule:  
Tuesdays 6:00PM (Sep 20, 2011 to Mar 13, 2012)

Location:  
Iceland (Rink 4)

Fee:  
350.00

13. Once you select a class you will see all the details of the class location, time , fee

### Mississauga Figure Skating Club

Invoice #: 1285059

details

		Fee	
Boy2005 ! Smith_10940	Role: Athlete Class: Canskate - Saturdays 10:25 - 11:15AM (Sep 17, 2011-Mar 17, 2012)	\$350.00	<a href="#">remove</a>
Jane !Smith_10940		\$0.00	<a href="#">remove</a>
Boy2005 ! Smith_10940	Role: Athlete Class: Canskate - Thursdays 6:05 - 6:55PM (Sep 22, 2011-Mar 15, 2012)	\$350.00	<a href="#">remove</a>

### Additional Fees

Each member (skater) is required to pay a Skate Canada fee (\$33)and an Administration fee (\$30) for the Fall/Winter Session. This is automatically added to the invoice for all StarSkate registrants.

You have a choice to purchase a box of Chocolates for \$60 or pay the profit on a box of Chocolate of \$30

PLEASE NOTE multiple class discounts will show on the payment page after you add the fundraising fee. If you are taking 4 sessions of Junior A or Junior B the last discount will have to be taken manually off your invoice. Please email us in this case.

Choose Family Member

\*Select One:

**Add Another Skater.** [Click here to apply fees to another skater](#)

14. . Once you are done selecting the classes for one child the screen will confirm choices and add in the PER SKATER fees- Skate Canada Feee \$33 and Admin. fee \$30 -- these are already included in the CanSkate classes. Our Fundraising fee of \$30 or purchasing a box of Chocolates at \$60 is added at this time.
15. You can add another skater registration at this time. -- CLICK ADD A SKATER-You will go back to the selection screen of family member and have to click through it again.... Just click DONE
16. . You will see a summary of classes and fees -- NO DISCOUNTS YET

### Mississauga Figure Skating Club

Invoice #: [1285059](#)

details

		Fee	
Boy2005 ! Smith_10940	Role: Athlete Class: Canskate - Saturdays 10:25 - 11:15AM (Sep 17, 2011-Mar 17, 2012)	\$350.00	<a href="#">remove</a>
Jane !Smith_10940		\$0.00	<a href="#">remove</a>
Boy2005 ! Smith_10940	Role: Athlete Class: Canskate - Thursdays 6:05 - 6:55PM (Sep 22, 2011-Mar 15, 2012)	\$350.00	<a href="#">remove</a>
Boy2005 ! Smith_10940	Role: Chocolates	\$60.00	<a href="#">remove</a>
Girl1995 ! Smith_10940	Role: Athlete Class: Junior A (incl. 2 lessons) - Tuesdays 7:00 - 8:00PM (Sep 06, 2011-Mar 13, 2012)	\$345.00	<a href="#">remove</a>
Girl1995 ! Smith_10940	Role: Athlete Skate Canada and Admin Fee	\$63.00	
Girl1995 ! Smith_10940	Role: Athlete Class: Junior A (incl. 2 lessons) - Thursdays 7:05 - 8:05PM (Sep 08, 2011-Mar 15, 2012)	\$345.00	<a href="#">remove</a>

---

### Additional Fees

Each member (skater) is required to pay a Skate Canada fee (\$33) and an Administration fee (\$30) for the Fall/Winter Session. This is automatically added to the invoice for all StarSkate registrants.

You have a choice to purchase a box of Chocolates for \$60 or pay the profit on a box of Chocolate of \$30

PLEASE NOTE multiple class discounts will show on the payment page after you add the fundraising fee. If you are taking 4 sessions of Junior A or Junior B the last discount will have to be taken manually off your invoice. Please email us in this case.

1. Information about the class is included and the location and \$\$ fee.

**Skater Registration**

Choose the skater (child) below, and then you will be asked to choose a fee type.

Choose Family Member

\*Program:

\*Class Name:

Description:

CANSKATE (Ages 5 years & up) is Canada's only national learn-to-skate program designed for beginners of all ages. This is a program that focuses on fun participation and basic skill development. Participants earn badges and other incentives as they learn fundamental skating skills. Lessons are given in a group format and led by an NCCP certified professional coach. Professional coaches are assisted by trained Program Assistants. The coach/program assistant to student ratio is a maximum of 1:10. Skaters progress at their own rate and coaches conduct sessions using teaching aids music and a wide variety of activities that create a fun environment and promote learning. Sessions are 50 minutes in length and include a large group warm-up and cool-down component. CanSkate is the feeder program to all other Skate Canada Skating Programs. CanSkate It was developed by experts to teach the fundamentals of skating in a progressive and sequential manner. The CanSkate program focuses on the development of six fundamental movements organized in six stages of learning with an optional 7th level for skaters who want to move into figure skating. The skills are arranged in progressions from very simple to the more complex. Each stage has a primary focus. Once the skills on each stage are mastered a badge is awarded. The series of badges include Stage badges Fundamental Movement badges and Fitness badges

Schedule:

Tuesdays 6:05PM

Location:

Tomken (Rink 1 to Sep.15) / Iceland (Rink 4)

Fee:

350.00

Level:

Are your bingo sessions booked?:

REGISTER ANOTHER PLAYER-Click here to register another player.



2. For Canskate—just Select N/A on the drop down for level and Bingos booked.

**Skater Registration**

Choose the skater (child) below, and then you will be asked to choose a fee type.

Choose Family Member:

\*Program:

\*Class Name:

Description:

CANSKATE (Ages 5 years & up) is Canada's only national learn-to-skate program designed for beginners of all ages. This is a program that focuses on fun participation and basic skill development. Participants earn badges and other incentives as they learn fundamental skating skills. Lessons are given in a group format and led by an NCCP certified professional coach. Professional coaches are assisted by trained Program Assistants. The coach/program assistant to student ratio is a maximum of 1:10. Skaters progress at their own rate and coaches conduct sessions using teaching aids music and a wide variety of activities that create a fun environment and promote learning. Sessions are 50 minutes in length and include a large group warm-up and cool-down component. CanSkate is the feeder program to all other Skate Canada Skating Programs. CanSkate It was developed by experts to teach the fundamentals of skating in a progressive and sequential manner. The CanSkate program focuses on the development of six fundamental movements organized in six stages of learning with an optional 7th level for skaters who want to move into figure skating. The skills are arranged in progressions from very simple to the more complex. Each stage has a primary focus. Once the skills on each stage are mastered a badge is awarded. The series of badges include Stage badges Fundamental Movement badges and Fitness badges

Schedule:

Tuesdays 6:05PM

Location:

Tomken (Rink 1 to Sep.15) / Iceland (Rink 4)

Fee:

350.00

Level:

Are your  
bingo  
sessions  
booked?:

REGISTER ANOTHER PLAYER-Click here to register another player.

3. Then select **Register Another Player** to add **another session** OR another child's registration

4. You will go back to the selection screen of family member and have to click through it again....  
Just click **DONE**

## Joe !Scott\_10940

(1) ✓ [Setup Family](#) (2) ✓ [Adult Info](#) (3) ✓ [Skater Info](#) (4) ✓ [Skater Registration](#) (5) [SUBMIT](#)

## Mississauga Figure Skating Club

Invoice #: [891966](#)

details

	Fee
Girl2000 !Scott_10940 Role: Athlete Class: Canskate - Tuesdays 6:05PM	\$350.00 <a href="#">remove</a>
Joe !Scott_10940	\$0.00 <a href="#">remove</a>
Anne !Scott_10940	\$0.00 <a href="#">remove</a>
Girl2000 !Scott_10940 Role: Athlete Chocolate Fundraising	\$60.00

## Skater Info

This step is to collect the player information. Please choose a child below. Once you finish providing info' step to provide information for your next child.

Choose Family Member

First Name: Girl2000  
Last Name: !Scott\_10940  
\* Birthday:     
\* Gender:   
\* Address:   
\* City:   
\* Province:   
\* Postal Code:   
\* Email:   
\* Home Phone: (  )  -   
Cell Phone: (  )  -   
Health Care #:

\* *required fields* - must be filled out to submit the form

DONE-Click this button to submit player information.

5. Chose the next Session--- **NOTE: the discount for the package of two or three sessions is automatic at the Submit stage**

6. You will see the information screen and location and times of the new session

**Additional Fees**

Each athlete is required to pay a Skate Canada fee (\$31) and an annual Administration fee (\$30).

Also, as a not-for-profit club we all need to contribute to fundraising programs- one of ours is the sale of Chocolates. Please choose one of the following:

- 1. Chocolates - \$60.00 - Case of chocolates can be sold to reclaim the 60.00 fee
- 2. Fundraising fee - 30.00 - fundraising opt out fee- if you do not wish to sell the chocolates

PLEASE NOTE multiple class discounts will show on the payment page after you add the fundraising fee.

Choose Family Member

\*Select One:

<input type="text" value="Chocolates (\$60.00)"/>	<input type="button" value="Choose Skater"/>
choose an option	
<input type="text" value="Chocolates (\$60.00)"/>	to apply fees to another skater.
<input type="text" value="Fundraising Fee (\$30.00)"/>	

7. Again chose the N/A drop down for level and Bingo Sessions. If that is the last session click **DONE** but if not keep going until you have all sessions selected:

## Skater Registration

Choose the skater (child) below, and then you will be asked to choose a fee type.

Choose Family Member

\*Program:

\*Class Name:

Description:

CANSKATE (Ages 5 years & up) is Canada's only national learn-to-skate program designed for beginners of all ages. This is a program that focuses on fun participation and basic skill development. Participants earn badges and other incentives as they learn fundamental skating skill Lessons are given in a group format and led by an NCCP certified professional coach. Professional coaches are assisted by trained Program Assistants. The coach/program assistant to student ratio is a maximum of 1:10. Skaters progress at their own rate and coaches conduct sessions using teaching aids music and a wide variety of activities that create a fun environment and promote learning. Sessions are 50 minutes in length and include a large group warm-up and cool-down component. CanSkate is the feeder program to all other Skate Canada Skating Programs. CanSkate It was developed by experts to teach the fundamentals of skating in a progressive and sequential manner. The CanSkate program focuses on the development of six fundamental movements organized in six stages of learning with an optional 7th level for skaters who want to move into figure skating. The skills are arranged in progressions from very simple to the more complex. Each stage has a primary focus. Once the skills on each stage are mastered a badge is awarded. The series of badges include Stage badges Fundamental Movement badges and Fitness badges

Schedule:

Saturdays 10:30AM

Location:

Tomken (Rink 1 to Sep.19) / Iceland (Rink 1)

Fee:

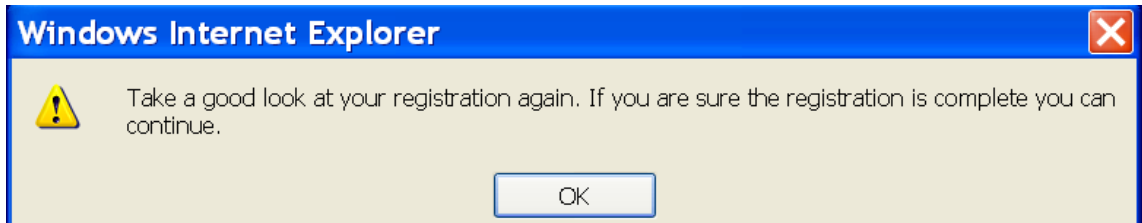
350.00

Level:

Are your  
bingo  
sessions  
booked?:

REGISTER ANOTHER PLAYER-Click here to register another player.

8. You will see this warning to review your registration—click **OK**



9. Please note: the steps on the Top of the registration should have Tick marks beside them AND you will see an item called : - one charge per skater  
Girl2000 !Scott\_10940 Role: Athlete Chocolate Fundraising \$60.00

*This is our fundraising Chocolates campaign- you will receive your Box of Chocolates the first week of Skating and you can sell them to reimburse yourself.—each bar costs \$2 @30 units. The profits from the chocolates go to offset costs of ice and coaching.*

10. If you forgot to add a session or want to add another skater... Click on

[ADD REGISTRATION ITEM](#)

Registration is complete

and you can continue to add classes.

22. Once you review your fees **CLICK MAKE PAYMENT**. You now see the Discount for Taking Two Canskate Classes

**MAKE PAYMENT**

Invoice #: 1285059		Fee
details		
Boy2005 ! Smith_10940	Role: Athlete Class: Canskate - Saturdays 10:25 - 11:15AM (Sep 17, 2011- Mar 17, 2012)	\$350.00
Jane !Smith_10940		no fee
Boy2005 ! Smith_10940	Role: Athlete Class: Canskate - Thursdays 6:05 - 6:55PM (Sep 22, 2011- Mar 15, 2012)	\$350.00
Boy2005 ! Smith_10940	Role: Chocolates	\$60.00
Girl1995 ! Smith_10940	Role: Athlete Class: Junior A (incl. 2 lessons) - Tuesdays 7:00 - 8:00PM (Sep 06, 2011-Mar 13, 2012)	\$345.00
Girl1995 ! Smith_10940	Role: Athlete Skate Canada and Admin Fee	\$63.00
Girl1995 ! Smith_10940	Role: Athlete Class: Junior A (incl. 2 lessons) - Thursdays 7:05 - 8:05PM (Sep 08, 2011-Mar 15, 2012)	\$345.00
Boy2005 ! Smith_10940	Role: Fundraising Fee	\$30.00
Girl1995 ! Smith_10940		no fee
Boy2005 ! Smith_10940		no fee
	Junior A Second Class	\$-80.00
	Canskate Second Class	\$-
		130.00

11. You now see the Discount for Taking Two Canskate Classes

19. Payment Screen: The total of the invoice is showing beside the Total amount of your payment—you need to pay **\$410 MINIMUM( OR FULL REGISTRATION AMOUNT )** or more with your registration; fill in the name and credit card number and **CHANGE THE PAYMENT AMOUNT**

IF YOU WISH TO PAY MORE AT THIS TIME. BRING POST - DATED CHEQUES TO FIRST SESSION FOR THE BALANCE OF THE PAYMENTS

\* Card holder's Name

\* E-mail

\* Address

\* City

\* Postal/Zip

\* Country

\* Total Amount \$  Total Owing: \$1333

\* Credit Card Type

\* Credit Card Number

\* Expire month

\* Expire year

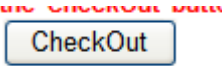
League ID 10940

\*The online payment process may take a while, please make sure you only press the 'CheckOut' button once, and be patient.

---

NOTE: This is a secured site and the club does not maintain any credit card information.

12. Payment Screen: The total of the invoice is showing beside the Total amount of your payment—you need to pay \$400 or more with your registration; fill in the name and credit card number and



NOTE: This is a secured site and the club does not maintain any credit card information.



### Credit Card Information - Nova

**Need to pay \$400 or more**

\* Card holder's Name

\* E-mail Test10940\_hmorrison@alum...

\* Address 10940 Sport Road

\* City Calgary

\* Postal/Zip T1T 1T1

\* Country CANADA

\* Total Amount2 \$ 1.00 **Total Owing: \$635**

\* Credit Card Type MASTERCARD

\* Credit Card Number

\* Expire month 01 - January

\* Expire year 2009

League ID 10940

\*The online payment process may take a while, please make sure you only press the 'CheckOut' button once, and be patient.

CheckOut